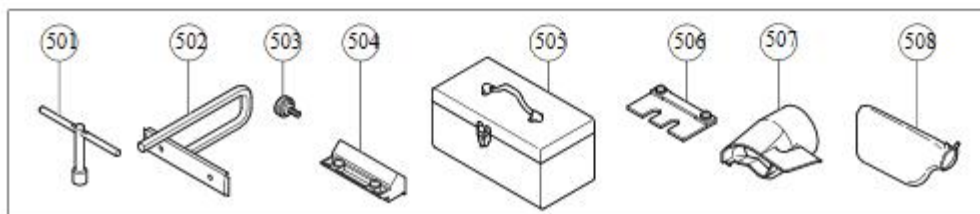
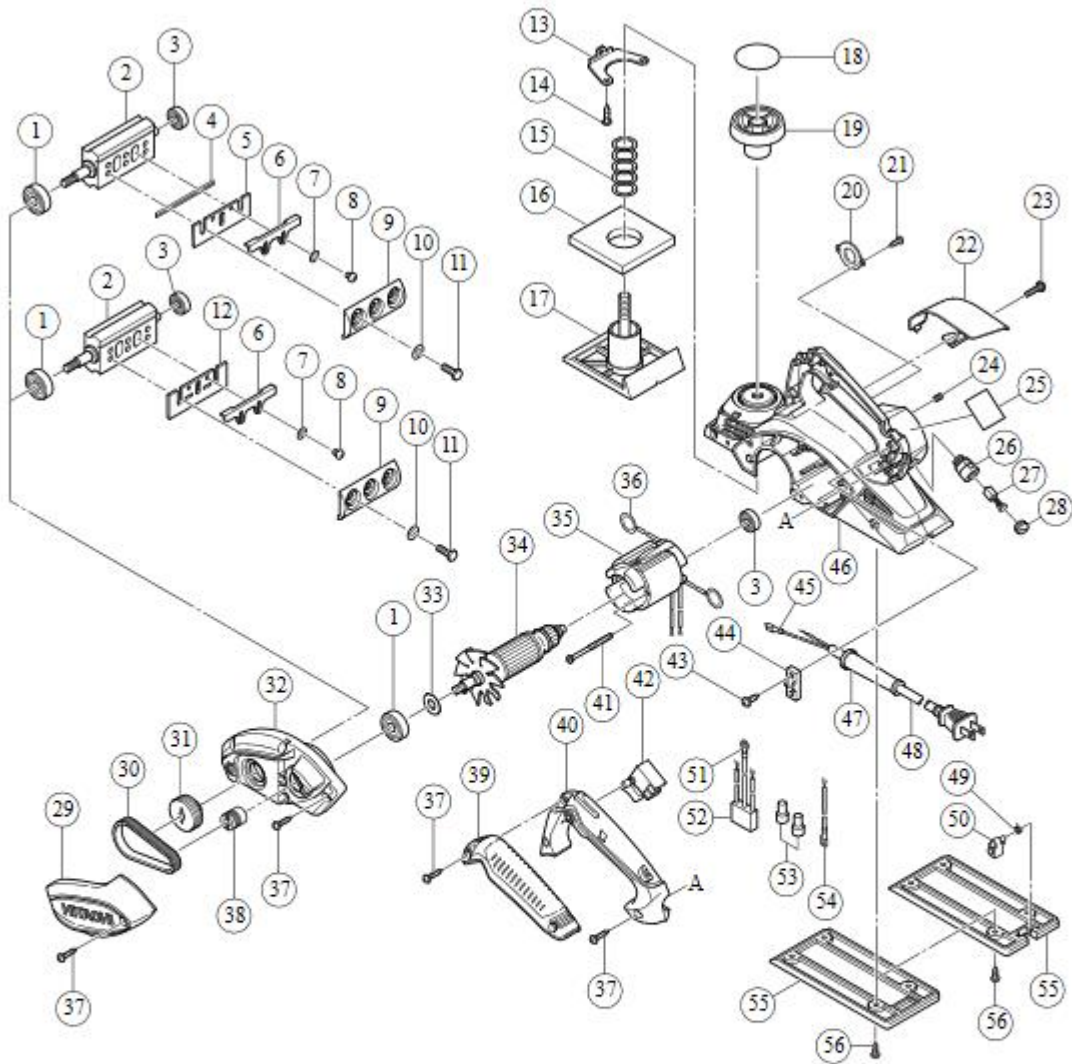


## Hitachi Power Tool Parts List

SVG Exploded Diagram  
 PLANER P 20ST



Rev.1

形名  
 P20ST

## PARTS

ITEM No.	CODE No.	DESCRIPTION	USED No.	REMARKS
1	6200VV	BALL BEARING 6200VVCMP2L	2	
2	334480	CUTTER BLOCK ASS'Y (W/B.B)	1	INCLUD.1,3 EXCEPT FOR IND
3	608VVM	BALL BEARING 608VVC2PS2L	2	
4	879418	PLANER BLADES (1 PAIR)	2	FOR DOUBLE EDGE BLADE TYPE
5	334478	SET PLATE (B) (1 PAIR)	2	FOR DOUBLE EDGE BLADE TYPE
6	314754	SET PLATE (A)	2	EXCEPT FOR IND
7	949423	WASHER M4 (10 PCS.)	4	EXCEPT FOR IND
8	949213	MACHINE SCREW M4X5 (10 PCS.)	4	EXCEPT FOR IND
9	316398	BLADE HOLDER (1 PAIR)	2	EXCEPT FOR IND
10	334706	WASHER 65MN T0.5	6	
11	334707	BOLT M6	6	
12	314746	PLANER BLADES 82MM (1 PAIR)	2	EXCEPT FOR DOUBLE EDGE BLADE TYPE
13	958945	SCREW PLATE	1	
14	954004	TAPPING SCREW D4X16	1	
15	958709	SPRING	1	
16	958708	RUBBER PACKING	1	
17	334738	FRONT BASE	1	
18		SCALE	1	
19	942328	KNOB	1	
20	334492	BEARING COVER	1	
21	309470	TAPPING SCREW (W/FLANGE) D4X12 (BLACK)	2	
22	334501	TIP COVER	1	
23	333163	MACHINE SCREW (BLACK) M4X16	1	
24	938477	HEX. SOCKET SET SCREW M5X8	2	
25		NAME PLATE	1	
26	957571	BRUSH HOLDER	2	
27	999021	CARBON BRUSH (1 PAIR)	2	
28	931266	BRUSH CAP	2	
29	334487	BELT COVER	1	
30	958718	BELT	1	
31	334491	PULLEY (B)	1	
32	334716	END BRACKET	1	
33	334713	WASHER (A)	1	
* 34	360942H	ARMATURE 110V	1	
* 34	360942U	ARMATURE ASS'Y 120V	1	INCLUD.1,3
* 34	360942D	ARMATURE 127V	1	
* 34	360942G	ARMATURE 220V	1	
* 34	360942E	ARMATURE 230V	1	
* 34	360942F	ARMATURE 240V	1	
* 35	340834C	STATOR ASS'Y 110V	1	INCLUD.36
* 35	340835C	STATOR ASS'Y 110V-120V	1	INCLUD.36 FOR USA,CAN (120V), SAU,UAE (110V)
* 35	340835D	STATOR ASS'Y 127V	1	INCLUD.36
* 35	340834E	STATOR ASS'Y 220V-230V	1	INCLUD.36
* 35	340835E	STATOR ASS'Y 220V-230V	1	INCLUD.36 FOR BRA (220V),PAN (220V),PHI, INA,SIN,HKG,IND,ISR,UAE (220V-230V)
* 35	340834F	STATOR ASS'Y 240V	1	INCLUD.36
* 35	340835F	STATOR ASS'Y 240V	1	INCLUD.36 FOR MAL,UAE (240V)
36	931867	BRUSH TERMINAL	2	
37	301653	TAPPING SCREW (W/FLANGE) D4X20 (BLACK)	1	0
38	334490	PULLEY (A)	1	
39	334717	GRIP COVER	1	
40	334484	HANDLE COVER	1	
41	960108	HEX. HD. TAPPING SCREW D4X60	2	
* 42	334474	SWITCH	1	W/OFF LOCK TYPE
* 42	322101	SWITCH	1	W/ON LOCK TYPE
43	984750	TAPPING SCREW (W/FLANGE) D4X16	2	

\*:ALTERNATIVE PARTS

## PARTS

ITEM No.	CODE No.	DESCRIPTION	USED No.	REMARKS
44	937631	CORD CLIP	1	
45	331707	FASTON	1	
* 46	334482	HOUSING ASS'Y	1	INCLUD.13,14,24,26
* 46	334483	HOUSING ASS'Y	1	INCLUD.13,14,24,26 FOR USA,CAN
* 47	938051	CORD ARMOR D10.1	1	
* 47	953327	CORD ARMOR D8.8	1	
* 48	500409Z	CORD	1	(CORD ARMOR D8.8)
* 48	500247Z	CORD	1	(CORD ARMOR D8.8) FOR NOR SWE,DEN,FIN
* 48	500432Z	CORD	1	(CORD ARMOR D8.8) FOR USA,CAN,MEX, PAN (120V)
* 48	500231Z	CORD	1	(CORD ARMOR D8.8) FOR SIN,MAL, UAE (230V-240V)
* 48	500201Z	CORD	1	(CORD ARMOR D10.1) FOR SAU,UAE (110V)
* 48	500455Z	CORD	1	(CORD ARMOR D8.8) FOR CHN,PHI
* 48	500439Z	CORD	1	(CORD ARMOR D8.8) FOR AUS,NZL
* 48	500435Z	CORD	1	(CORD ARMOR D8.8) FOR GBR (230V),HKG
* 48	500461Z	CORD	1	(CORD ARMOR D8.8) FOR GBR (110V)
* 48	500447Z	CORD	1	(CORD ARMOR D8.8) FOR SUI
* 48	500487Z	CORD	1	(CORD ARMOR D8.8) FOR BRA
* 48	500470Z	CORD	1	(CORD ARMOR D8.8) FOR TPE
* 48	500234Z	CORD	1	(CORD ARMOR D8.8) FOR KOR
49	334499	STAND	1	FOR USA,CAN
50	334500	SPRING	1	FOR USA,CAN
* 51	961419Z	TERMINAL	1	FOR AUS,NZL,SAF,GBR,EUROPE,NOR,SWE,DEN, FIN,AUT,TUR,SUI,RUS,CHN,TPE,KOR
* 52	334472	NOISE SUPPRESSOR	1	FOR AUS,NZL,SAF,GBR,EUROPE,NOR,SWE,DEN, FIN,AUT,TUR,SUI,RUS,CHN,TPE,KOR
* 53	959140	CONNECTOR 50091 (10 PCS.)	1	
* 53	959141	CONNECTOR 50092 (10 PCS.)	2	FOR AUS,NZL,SAF,GBR,EUROPE,NOR,SWE,DEN, FIN,AUT,TUR,SUI,RUS,CHN,TPE,KOR
* 54	331269	INTERNAL WIRE	1	FOR AUS,NZL,SAF,GBR,EUROPE,NOR,SWE,DEN, FIN,AUT,TUR,SUI,RUS,CHN,TPE,KOR
* 55	334837	REAR BASE	1	EXCEPT FOR USA,CAN
* 55	334838	REAR BASE	1	FOR USA,CAN
56	307811	TAPPING SCREW (W/FLANGE) D4X16 (BLACK)	4	
		STANDARD ACCESSORIES		
		OPTIONAL ACCESSORIES		

## STANDARD ACCESSORIES

ITEM No.	CODE No.	DESCRIPTION	USED No.	REMARKS
501	940543	BOX WRENCH 10MM	1	
502	958842Z	GUIDE	1	
503	940650	STOPPER SCREW M5X14	1	
504	314767	BLADE SHARPENING ASS'Y	1	EXCEPT FOR DOUBLE EDGE BLADE TYPE
505	334846	CASE	1	FOR USA,CAN
506	316419	SET GAUGE	1	EXCEPT FOR IND
507	334502	DUST ADAPTER	1	FOR USA,CAN
508	322955	DUST BAG (BLACK)	1	FOR USA,CAN

## OPTIONAL ACCESSORIES

ITEM No.	CODE No.	DESCRIPTION	USED No.	REMARKS
601	334503	ELBOW	1	

## OPTIONAL ACCESSORIES

ITEM No.	CODE No.	DESCRIPTION	USED No.	REMARKS
602	334502	DUST ADAPTER	1	
603	322955	DUST BAG (BLACK)	1	